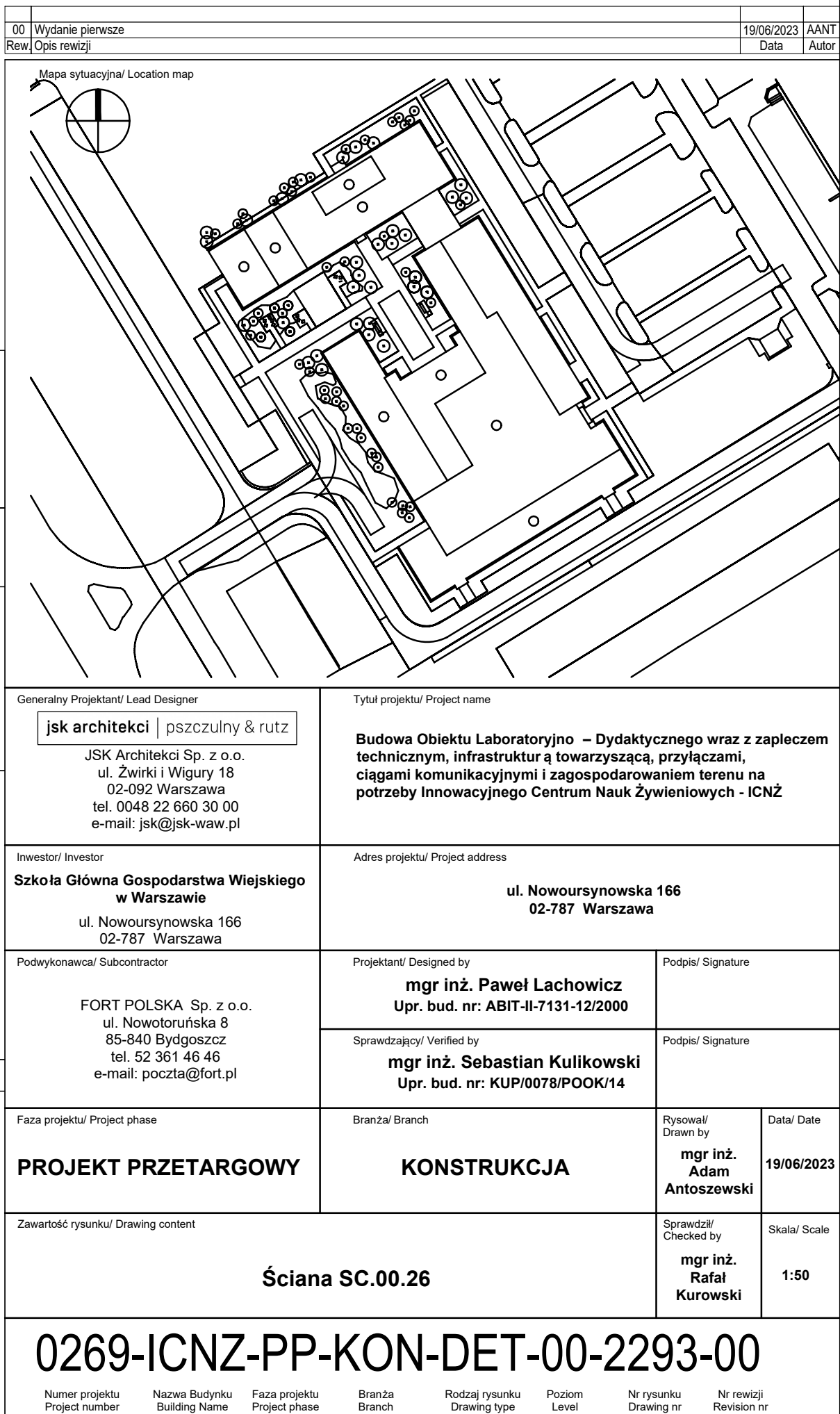
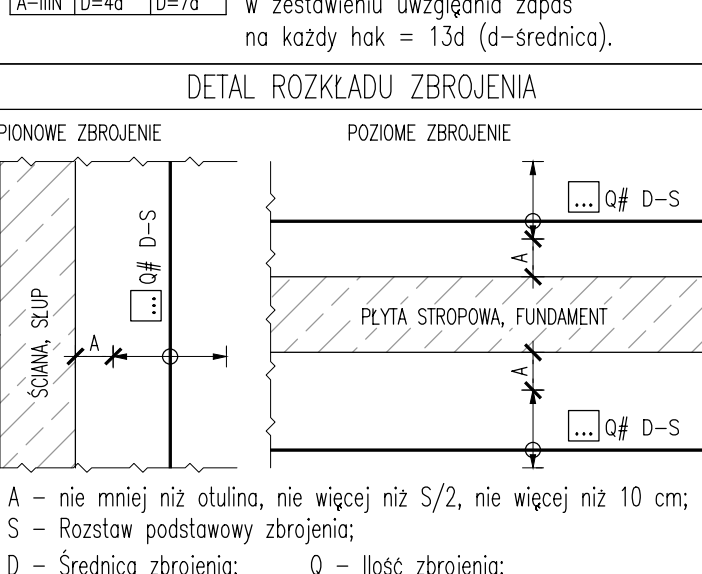
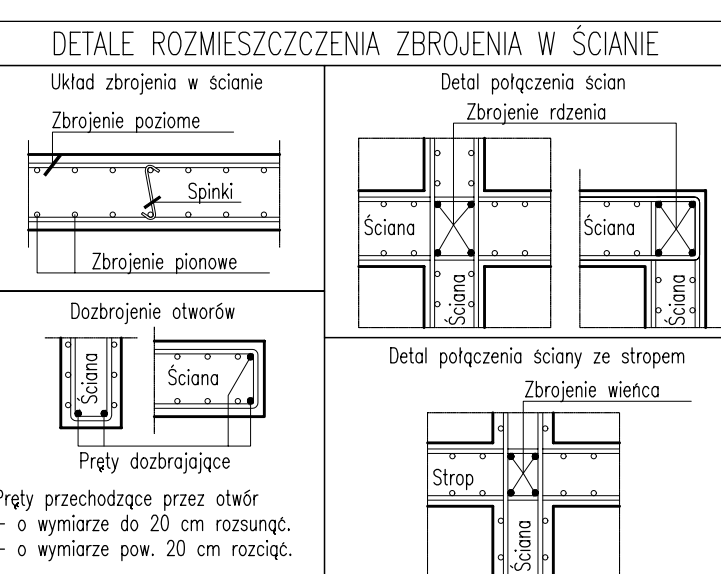
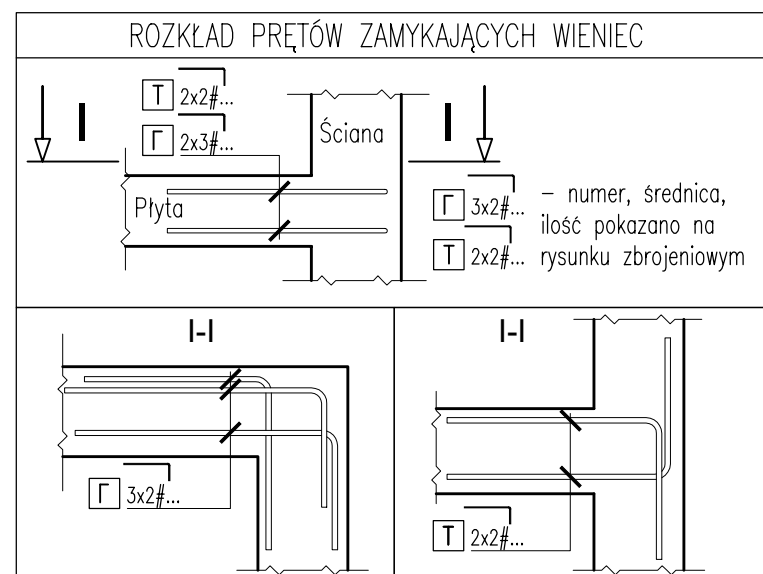
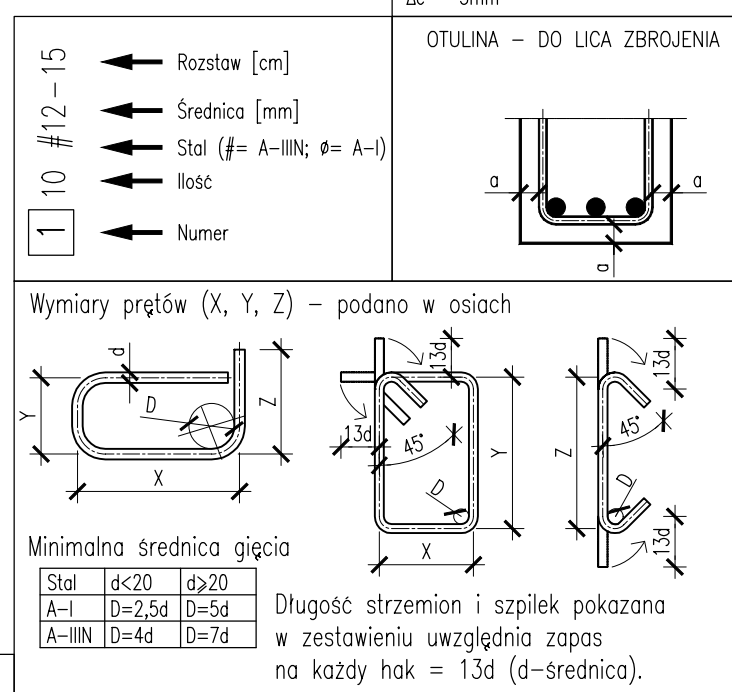
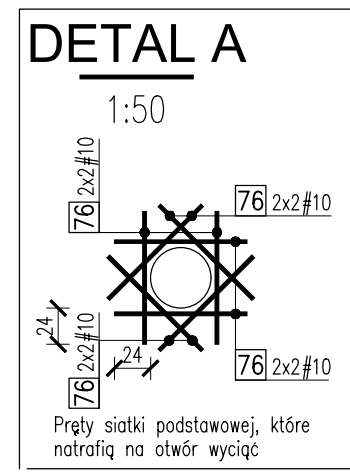
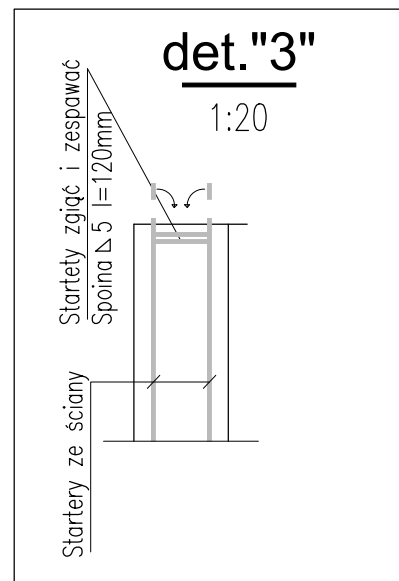
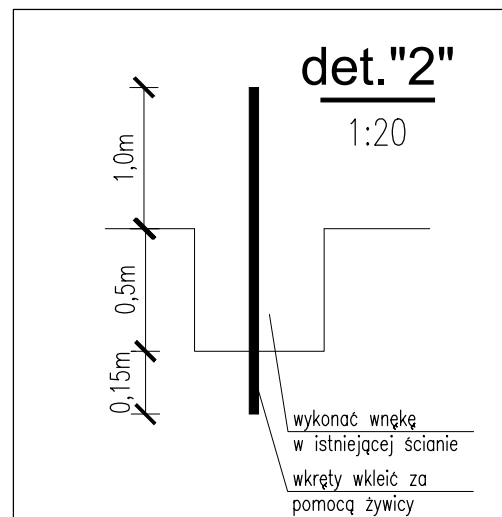
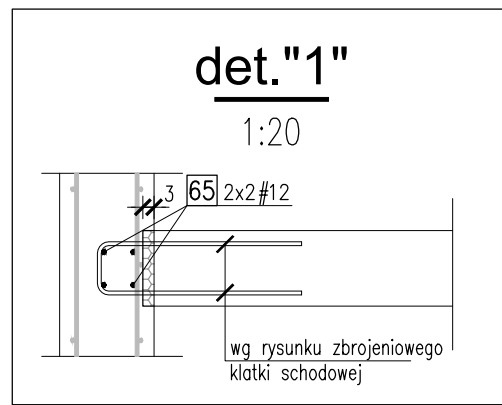
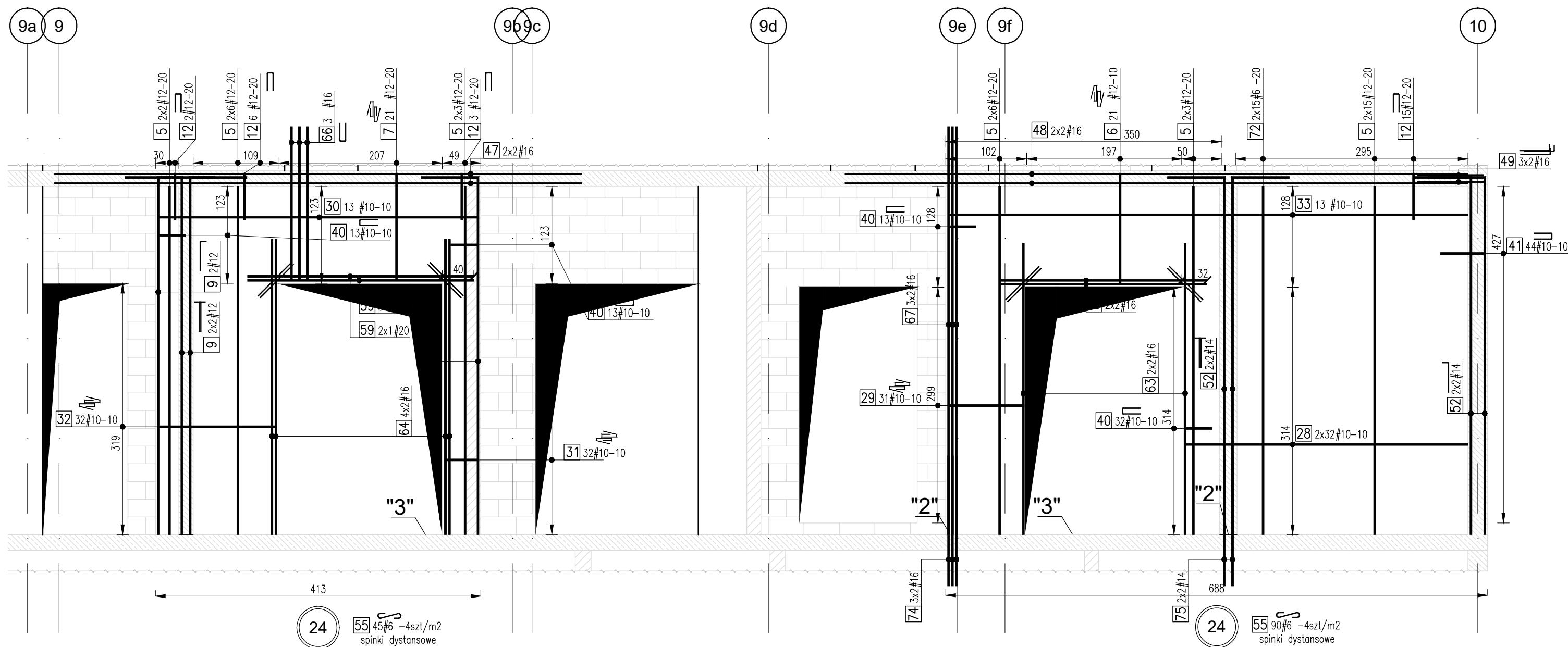
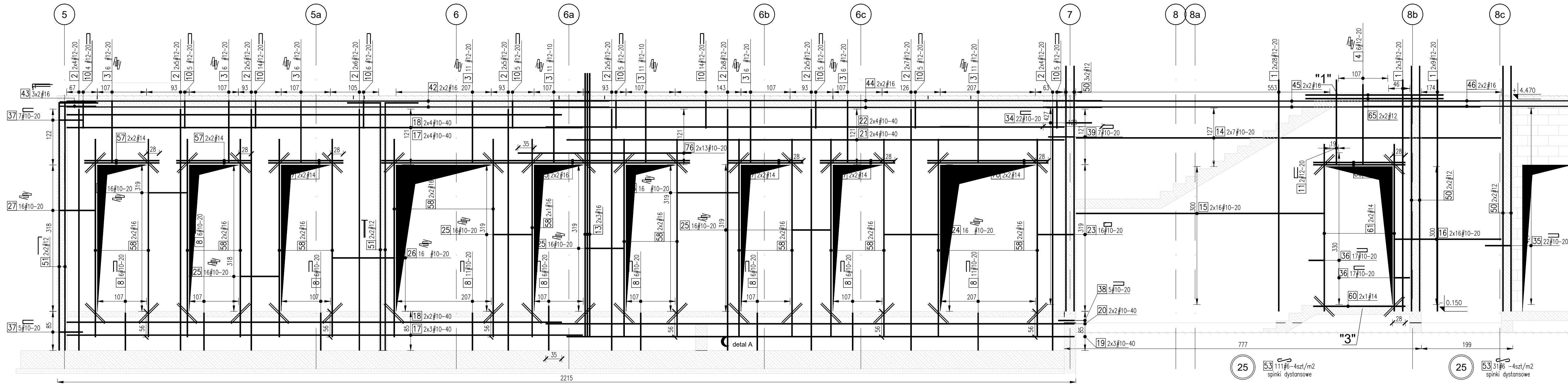


Stal zbrojeniowa / Reinforcement						
Nr pręta Bar's No	Ilość Quantity	Stal Steel	Długość Length	Kształt pręta Shape of bar		
1	80	12	5,04			
2	108	12	5,25			
3	74	12	3,30			
4	6	12	4,18			
5	70	12	4,42			
6	21	12	3,48			
7	21	12	3,38			
8	64	10	1,73			
9	8	12	5,25			
10	68	12	1,31			
11	2	12	3,88			
12	26	12	1,31			
13	6	16	5,75			
14	14	10	9,25			
15	32	10	5,40			
16	32	10	2,33			
17	14	10	11,22			
18	12	10	10,77			
19	6	10	11,04			
20	4	10	11,50			
21	8	10	10,82			
22	8	10	11,28			
23	16	10	2,16			
24	16	10	3,03			
25	80	10	2,37			
26	32	10	3,37			
27	16	10	2,23			
28	64	10	3,60			
29	31	10	2,63			
30	13	10	4,06			
31	32	10	1,50			
32	32	10	3,66			
33	13	10	6,59			
34	22	10	1,33			
35	22	10	1,31			
36	34	10	0,89			
37	12	10	1,18			
38	5	10	0,84			
39	7	10	1,26			
40	71	10	0,88			
41	44	10	1,30			
42	4	16	11,80			
43	6	16	1,58			
44	4	16	12,00			
45	4	16	9,50			
46	4	16	4,54			
47	4	16	6,68			
48	4	16	7,90			
49	6	16	1,66			
50	14	12	5,34			
51	8	12	6,10			
52	8	14	5,37			
53	142	6	0,35			
54	311	6	0,30			
55	135	6	0,34			
56	176	8	0,60			
57	20	14	1,63			
58	34	16	4,31			
59	5	20	2,87			
60	6	14	2,00			
61	4	14	3,64			
63	4	16	3,70			
64	8	16	3,75			
65	4	12	3,00			
66	3	16	1,95			
67	6	16	5,18			
69	4	16	2,61			
70	4	14	2,63			
72	30	6	4,42			
73	4	16	6,71			
74	6	16	1,65			
75	4	14	1,65			
76	26	10	3,77			
77	16	10	0,80			

PODSUMOWANIE ZESTAWIENIA / STEEL SPECIFICATION SUMMARY				
Ścianka/Border	Stal/Steel	Długość/Length [m]	Masa/Mass [kg]	Opis/Note [kg]
6	B500SP	321,50	0,222	71,4
8	B500SP	105,60	0,395	41,7
10	B500SP	2440,61	0,617	1505,9
12	B500SP	2001,40	0,888	1777,2
14	B500SP	119,24	1,208	144,0
16	B500SP	539,07	1,578	850,7
20	B500SP	14,35	2,466	35,4
Masa/Mass A-I		0 kg		
Masa/Mass B500SP		4426,3 kg		
Masa całkowita/Total mass		4426,3 kg		



Ściana SC.00.26

0269-ICNZ-PP-KON-DET-00-2293-00