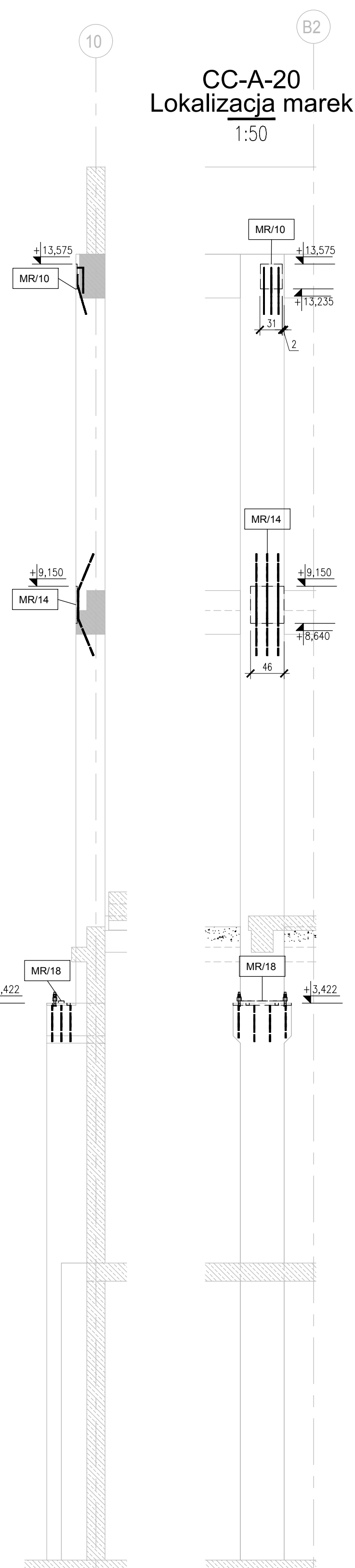


		Stal zbrojenica / Reinforcement				
No preta Bar's No	Iste Quantity	Stal Steel 600SOP	Stal Steel A-1	Dugost Length m	Kazetište prego Shape of bar	
100	4	25	5,58		150	180 420
101	3	25	5,58		150	180 360
102	14	8	3,18		18	180
103	28	A-1	0,44		32	10
PODSUMOVANJE ZESTAVENJA / STEEL SPECIFICATION SUMMARY						
Šezmje/Number	Stal/Steel	Dugost/Length	Masa/Mass (kg)	Masa/Mass (kg)	Cijena/Price (kg)	
8	600SOP	56,64	0,395	22,4		
25	600SOP	40,26	3,853	155,1		
Masa/Mass	A-1	0,44				
Masa/Mass	600SOP	177,6 kg				
Masa ukupno/Total mass		177,6 kg				



The image displays two architectural elevations of a building facade, likely for a residential or institutional structure. The drawings are highly detailed, showing window placements, dimensions, and structural elements.

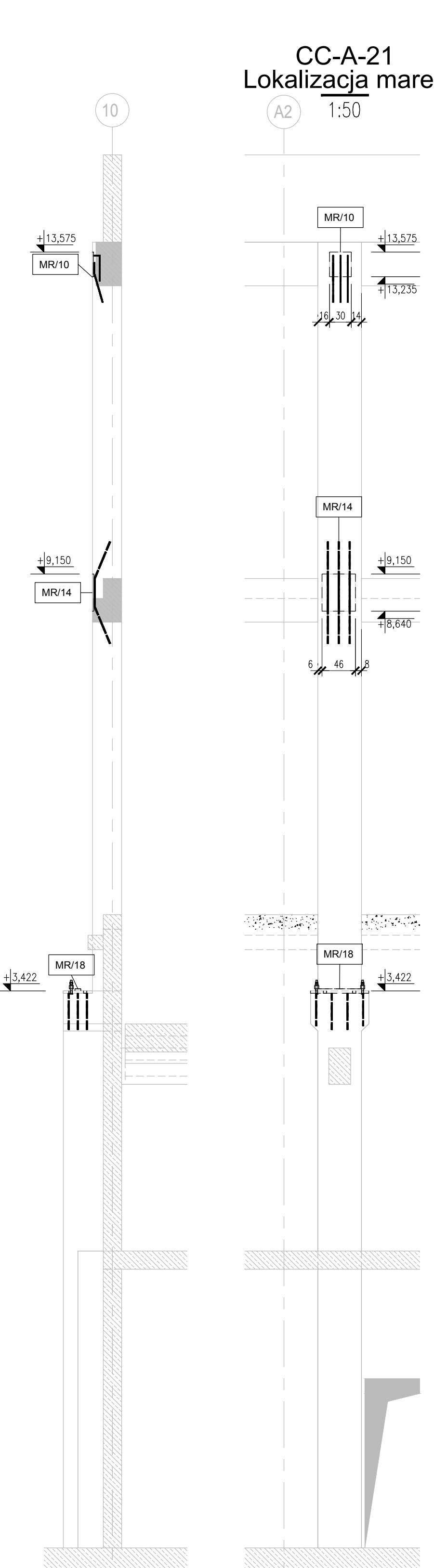
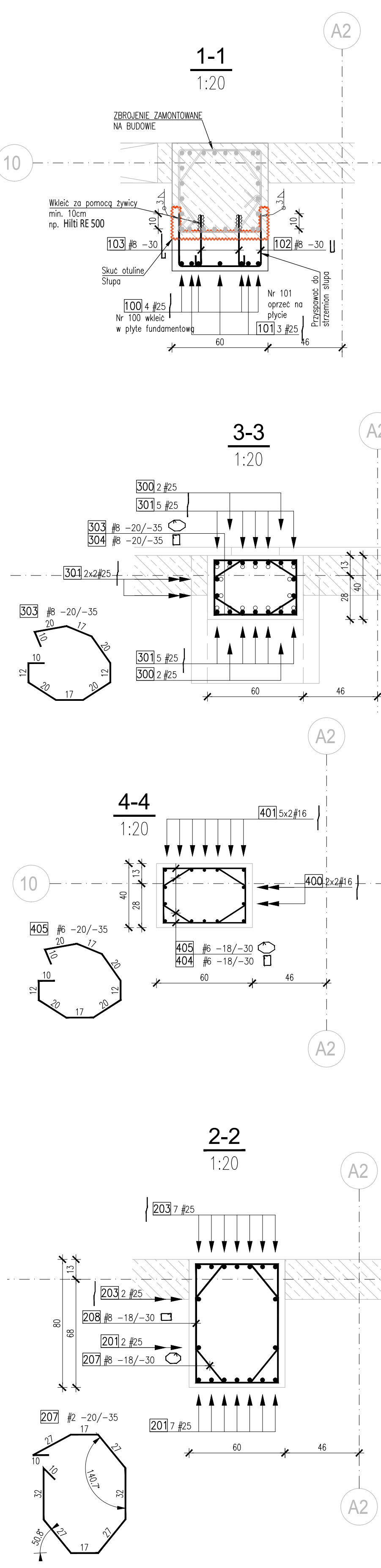
Left Elevation (Facing East - Wschód):

- Windows:** Various window types are indicated, including 103, 102, 101, 207, 208, 209, 303, 304, 403, 404, 405, 406, 407, 408, 409, 410, 411, 412, 413, 414, 415, 416, 417, 418, 419, 420, 421, 422, 423, 424, 425, 426, 427, 428, 429, 430, 431, 432, 433, 434, 435, 436, 437, 438, 439, 440, 441, 442, 443, 444, 445, 446, 447, 448, 449, 450, 451, 452, 453, 454, 455, 456, 457, 458, 459, 460, 461, 462, 463, 464, 465, 466, 467, 468, 469, 470, 471, 472, 473, 474, 475, 476, 477, 478, 479, 480, 481, 482, 483, 484, 485, 486, 487, 488, 489, 490, 491, 492, 493, 494, 495, 496, 497, 498, 499, 500.
- Dimensions:** Vertical dimensions include 1.230, 1.400, 1.500, 1.600, 1.700, 1.800, 1.900, 2.000, 2.100, 2.200, 2.300, 2.400, 2.500, 2.600, 2.700, 2.800, 2.900, 3.000, 3.100, 3.200, 3.300, 3.400, 3.500, 3.600, 3.700, 3.800, 3.900, 4.000, 4.100, 4.200, 4.300, 4.400, 4.500, 4.600, 4.700, 4.800, 4.900, 5.000, 5.100, 5.200, 5.300, 5.400, 5.500, 5.600, 5.700, 5.800, 5.900, 6.000, 6.100, 6.200, 6.300, 6.400, 6.500, 6.600, 6.700, 6.800, 6.900, 7.000, 7.100, 7.200, 7.300, 7.400, 7.500, 7.600, 7.700, 7.800, 7.900, 8.000, 8.100, 8.200, 8.300, 8.400, 8.500, 8.600, 8.700, 8.800, 8.900, 9.000, 9.100, 9.200, 9.300, 9.400, 9.500, 9.600, 9.700, 9.800, 9.900, 10.000, 10.100, 10.200, 10.300, 10.400, 10.500, 10.600, 10.700, 10.800, 10.900, 11.000, 11.100, 11.200, 11.300, 11.400, 11.500, 11.600, 11.700, 11.800, 11.900, 12.000, 12.100, 12.200, 12.300, 12.400, 12.500, 12.600, 12.700, 12.800, 12.900, 13.000, 13.100, 13.200, 13.300, 13.400, 13.500, 13.600, 13.700, 13.800, 13.900, 14.000, 14.100, 14.200, 14.300, 14.400, 14.500, 14.600, 14.700, 14.800, 14.900, 15.000, 15.100, 15.200, 15.300, 15.400, 15.500, 15.600, 15.700, 15.800, 15.900, 16.000, 16.100, 16.200, 16.300, 16.400, 16.500, 16.600, 16.700, 16.800, 16.900, 17.000, 17.100, 17.200, 17.300, 17.400, 17.500, 17.600, 17.700, 17.800, 17.900, 18.000, 18.100, 18.200, 18.300, 18.400, 18.500, 18.600, 18.700, 18.800, 18.900, 19.000, 19.100, 19.200, 19.300, 19.400, 19.500, 19.600, 19.700, 19.800, 19.900, 20.000, 20.100, 20.200, 20.300, 20.400, 20.500, 20.600, 20.700, 20.800, 20.900, 21.000, 21.100, 21.200, 21.300, 21.400, 21.500, 21.600, 21.700, 21.800, 21.900, 22.000, 22.100, 22.200, 22.300, 22.400, 22.500, 22.600, 22.700, 22.800, 22.900, 23.000, 23.100, 23.200, 23.300, 23.400, 23.500, 23.600, 23.700, 23.800, 23.900, 24.000, 24.100, 24.200, 24.300, 24.400, 24.500, 24.600, 24.700, 24.800, 24.900, 25.000, 25.100, 25.200, 25.300, 25.400, 25.500, 25.600, 25.700, 25.800, 25.900, 26.000, 26.100, 26.200, 26.300, 26.400, 26.500, 26.600, 26.700, 26.800, 26.900, 27.000, 27.100, 27.200, 27.300, 27.400, 27.500, 27.600, 27.700, 27.800, 27.900, 28.000, 28.100, 28.200, 28.300, 28.400, 28.500, 28.600, 28.700, 28.800, 28.900, 29.000, 29.100, 29.200, 29.300, 29.400, 29.500, 29.600, 29.700, 29.800, 29.900, 30.000, 30.100, 30.200, 30.300, 30.400, 30.500, 30.600, 30.700, 30.800, 30.900, 31.000, 31.100, 31.200, 31.300, 31.400, 31.500, 31.600, 31.700, 31.800, 31.900, 32.000, 32.100, 32.200, 32.300, 32.400, 32.500, 32.600, 32.700, 32.800, 32.900, 33.000, 33.100, 33.200, 33.300, 33.400, 33.500, 33.600, 33.700, 33.800, 33.900, 34.000, 34.100, 34.200, 34.300, 34.400, 34.500, 34.600, 34.700, 34.800, 34.900, 35.000, 35.100, 35.200, 35.300, 35.400, 35.500, 35.600, 35.700, 35.800, 35.900, 36.000, 36.100, 36.200, 36.300, 36.400, 36.500, 36.600, 36.700, 36.800, 36.900, 37.000, 37.100, 37.200, 37.300, 37.400, 37.500, 37.600, 37.700, 37.800, 37.900, 38.000, 38.100, 38.200, 38.300, 38.400, 38.500, 38.600, 38.700, 38.800, 38.900, 39.000, 39.100, 39.200, 39.300, 39.400, 39.500, 39.600, 39.700, 39.800, 39.900, 40.000, 40.100, 40.200, 40.300, 40.400, 40.500, 40.600, 40.700, 40.800, 40.900, 41.000, 41.100, 41.200, 41.300, 41.400, 41.500, 41.600, 41.700, 41.800, 41.900, 42.000, 42.100, 42.200, 42.300, 42.400, 42.500, 42.600, 42.700, 42.800, 42.900, 43.000, 43.100, 43.200, 43.300, 43.400, 43.500, 43.600, 43.700, 43.800, 43.900, 44.000, 44.100, 44.200, 44.300, 44.400, 44.500, 44.600, 44.700, 44.800, 44.900, 45.000, 45.100, 45.200, 45.3

Steel Reinforcement / Verstärkung						
No. pref. Bar / No.	Rein. Quantity	Steel		Diagonal Length m	Kazlalt pref. Shape of bar	
		BS500P mm	A-1 mm			
100	4	25		5,58	150	180 420
101	3	25		5,88		150 180 390
102	14	8		3,18	150	
103	28	8		0,44	32	

PODSUMOVANIE ZASTAVENIA / REIN. SPECIFICATION SUMMARY

Stavba / Zastava	Steel Type	Diagonal Length (m)	Weight (kg/m)	Exp. Mass (kg)
8	BS500P	56,84	0,395	22,4
25	BS500P	40,26	3,853	155,1
Mass, Mass	A-1	0	0 kg	
Mass, Mass	BS500P	177,6		
		177,6		



Architectural drawing of a wall section showing reinforcement details. The drawing includes three reinforcement levels: MR/10, MR/14, and MR/18. MR/10 is at elevation +13.575, MR/14 at +13.235, and MR/18 at +13.150. The wall has a total height of 13.235m. The reinforcement is shown as vertical bars with horizontal ties. The drawing is labeled "Detal - dozbrojenie wsporn" and "1:20".

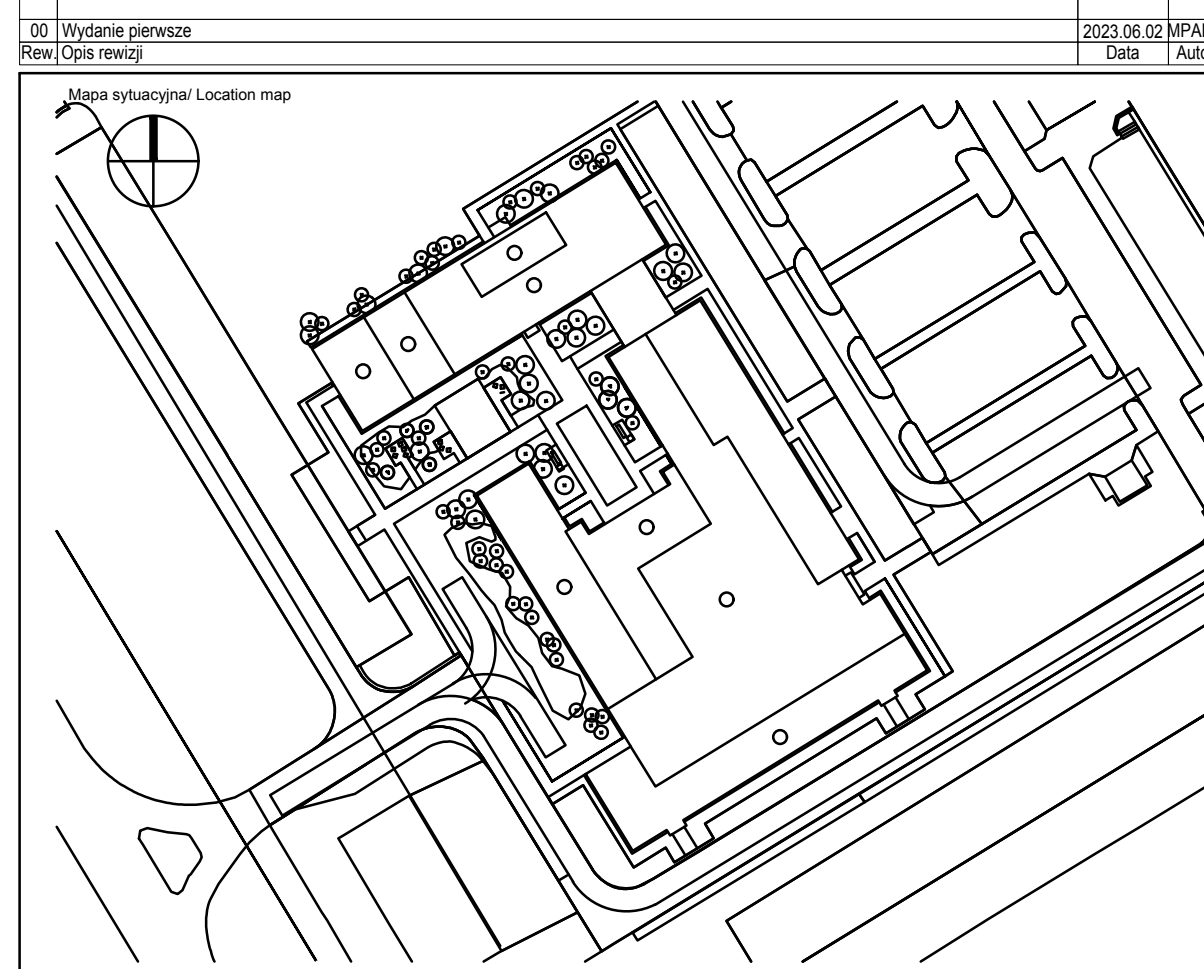
Wymiary prętlów (X, Y, Z) – podano w osiach

Minimalna średnica gniazda

Stal	Ś420	Ś520
A=1	B=34	C=44
A=11N	D=64	D=74

Długość sztrzenia i szpilek pokazano w zestawieniu uwzględniają zapis na każdy hak $13d$ (d – średnica).

OTULINA – DO LICZA ZBIJOWA



Główny Projektant / Lead Designer		Tytuł i tematyka Projektu / name	
<div></div>		Budowa Obiektu Laboratoryjnego – Wydziałczynego wraz z zapleczem technicznym, infrastruktura towarzysząca, przyłączami, ciągami komunikacyjnymi i zagospodarowaniem terenu na potrzeby Innowacyjnego Centrum Nauk Żywnościowych - ICNZ	
JSK Architekt Sp. z o.o. ul. Żurka i Wigury 18 02-092 Warszawa tel. 0048 22 660 30 00 e-mail: jsk@jsk-waw.pl			
Inwestor / Investor		Adres projektu / Address	
Szkoła Główna Gospodarstwa Wiejskiego w Warszawie ul. Nowoursynowska 166 02-787 Warszawa		ul. Nowoursynowska 166 02-787 Warszawa	
Podwykonawca / Subcontractor		Projektant / Designed by	
FORT POLSKA Sp. z o.o. ul. Nowotourska 9 85-840 Bydgoszcz tel. 52 351 16 46 e-mail: poc@fort.pl		mgr inż. Paweł Lachowicz Upr. bud. nr: ABIT-8-7131/122000	
		Sprawdził / Verified by	
		mgr inż. Sebastian Kulikowski Upr. bud. nr: KUPB-7/P00K14	
Faza projektu / Project phase		Etap / Branch	
PROJEKT PRZETARGOWY		KONSTRUKCJA	
Zawartość / Content of Drawing sheet		Wykonanie / Execution	
		mgr inż. Rafał Kurkowski	
		Data / Date	
		12/06/2022	
		Status / Status	
		1:50	
		1:20	
ZBROJENIE ŻELAZA CC-A-20; CC-A-21			
0269-ICZN-PP-KON-DE-ZZ-2216-00			
Numer projektu / Project number			
Nazwa budynku / Building Name			
Faza projektu / Project phase			
Stan / Branch			
Rodzaj / Typu / Drawing type			
Pozost / Level			
W wykon / Drawing in			
W rewi / Revision in			